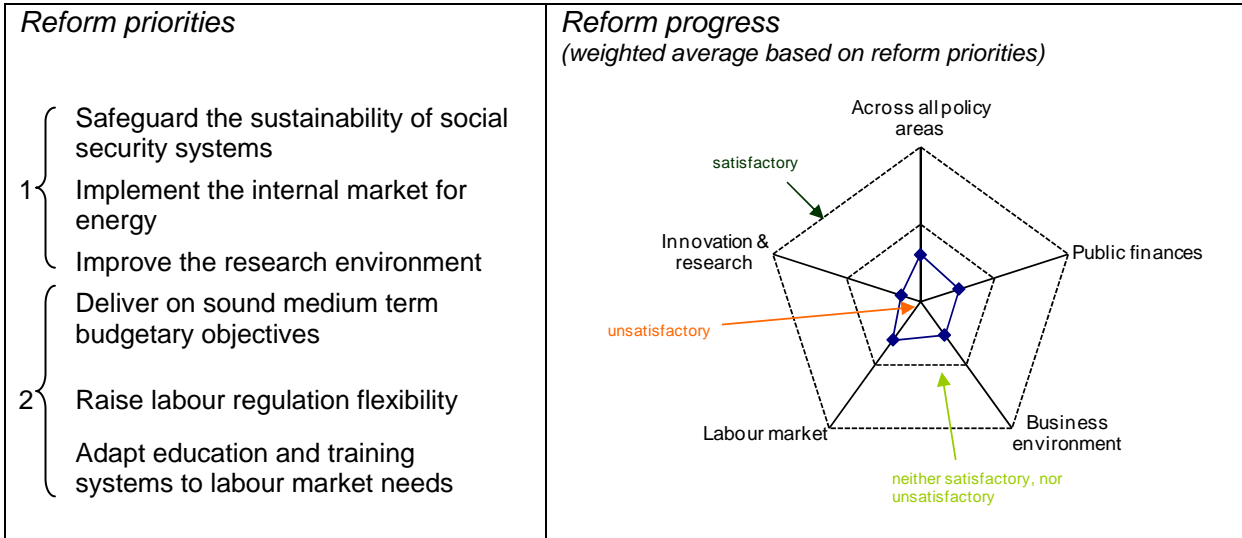


SPRING 2009 REFORM BAROMETER: ANSWERS FROM BDA AND BDI (GERMANY)

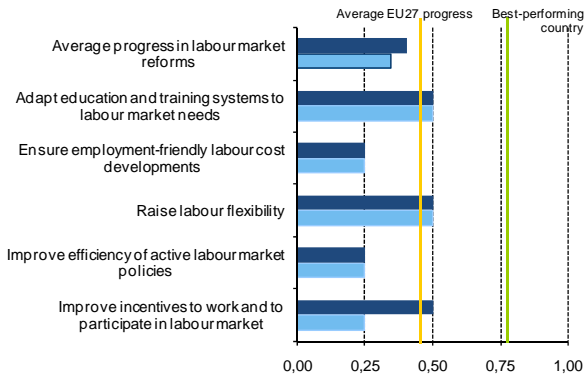


REFORM PROGRESS IN FOUR MAJOR POLICY AREAS IN 2008 AND 2007

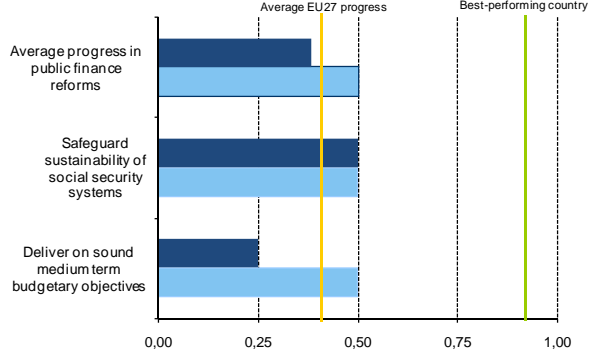
(Average progress is weighted by reform priorities, scale ranging from deteriorating "0.00" to excellent "1.00")

■ 2008 ■ 2007

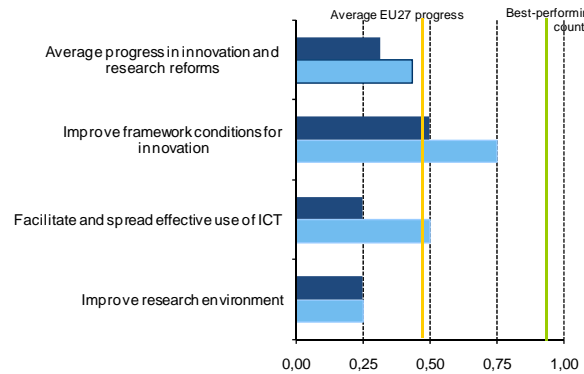
Labour market



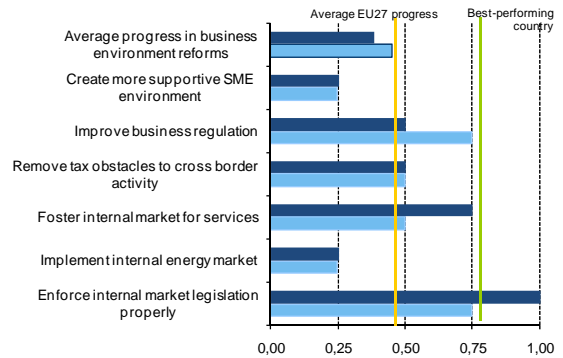
Public finances



Innovation and research



Business environment





ASSESSMENT OF SPRING SUMMIT 2008 COUNCIL RECOMMENDATIONS

Was an update of the Council's country-specific recommendations needed in 2009?	Yes
Were country specific recommendations implemented in 2008?	to some extent
Is your federation appropriately involved in the national debate on the implementation of the EU Growth and Jobs Strategy?	to some extent
Are the necessary steps taken to adjust policies to the specific requirements of euro area membership?	to some extent