



ASSESSMENT BY LUXEMBOURG BUSINESS FEDERATION:

Contact the expert: [\(email\)](#)

Overall progress in reforms to transpose and enforce internal market legislation in Luxembourg

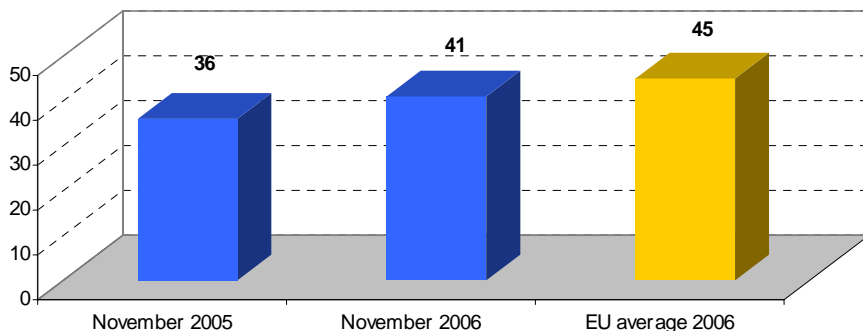


Assessment of progress in specific policy areas:

Q 1: Progress in implementing the internal market for energy

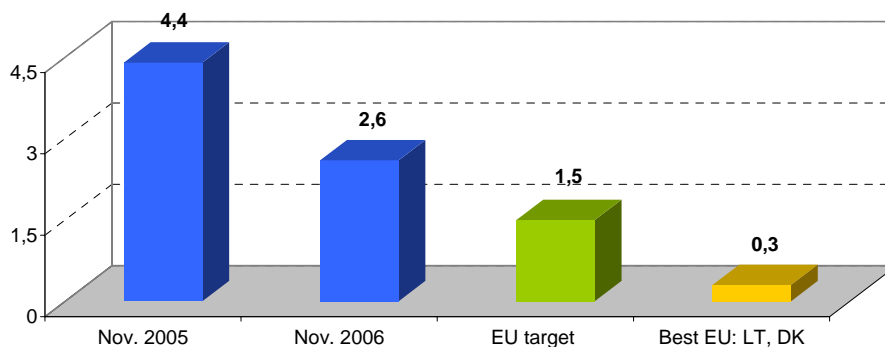


Infringement Procedures: Luxembourg



Source: European Commission

Internal Market Directives not yet transposed in % of all Directives: Luxembourg



Source: European Commission