



ASSESSMENT BY GERMAN BUSINESS FEDERATIONS:

Contact the expert: [\(email\)](#)

Overall progress in reforms to create a more competitive business environment in Germany



Assessment of progress in specific policy areas:

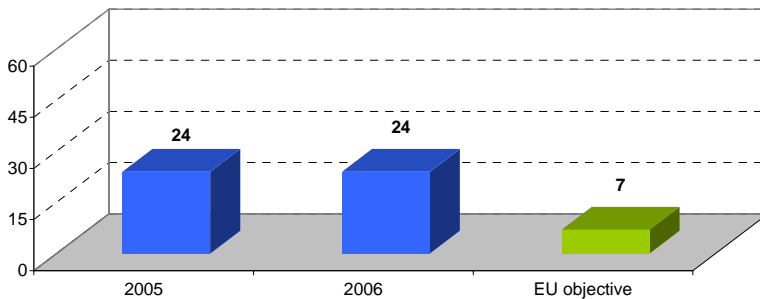
Q 1: Progress in reforms to improve business regulations



Q 2: Progress in reforms to create a supportive environment for SMEs:

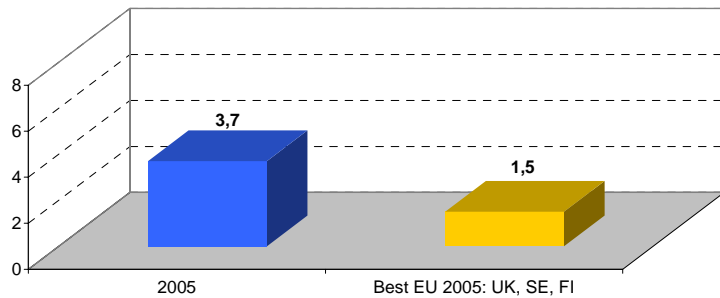


Days needed to start a business in: Germany



Source: World Bank

Administrative burden in % of GDP: Germany



Source: European Commission