

ASSESSMENT BY CZECH BUSINESS FEDERATION:

Contact the expert: [\(email\)](#)

Overall progress towards sustainable public finances in the Czech Republic



Assessment of progress in specific policy areas:

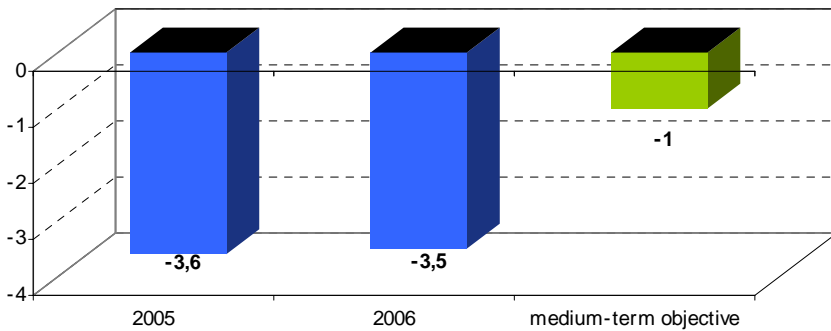
Q 1: Progress towards the **medium-term objective**



Q 2: Progress in reforms of **social security systems** in view of the projected costs of an ageing population

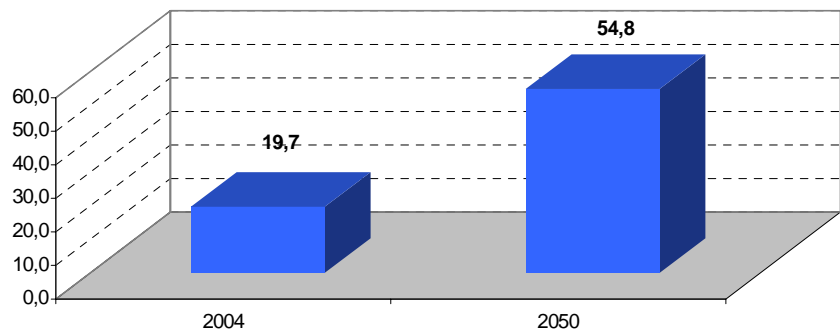


Public Balance in % of GDP: Czech Republic



Source: European Commission

Share of people older than 65 in % of working age people: Czech Republic



Source: European Commission