



ASSESSMENT BY PORTUGUESE BUSINESS FEDERATIONS:

Contact the expert: [\(email\)](#)

Overall progress towards sustainable public finances in Portugal 

Assessment of progress in specific policy areas:

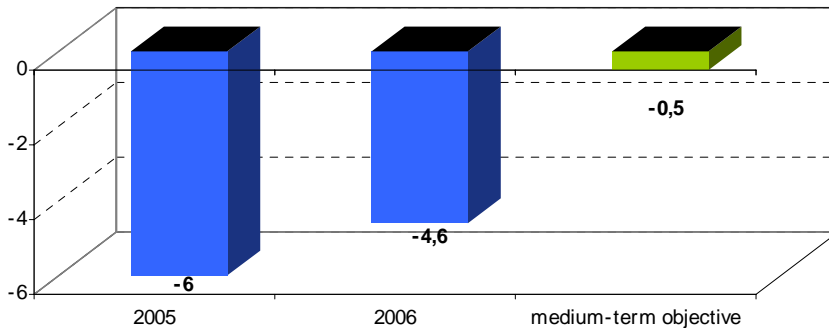
Q 1: Progress towards the medium-term objective



Q 2: Progress in reforms of social security systems in view of the projected costs of an ageing population

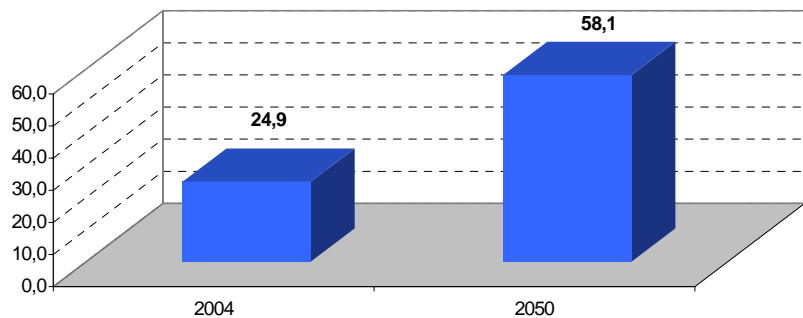


Public Balance in % of GDP: Portugal



Source: European Commission

Share of people older than 65 in % of working age people: Portugal



Source: European Commission