



**ASSESSMENT BY LUXEMBOURG BUSINESS FEDERATION:**

Contact the expert: [\(email\)](#)

**Overall progress towards sustainable public finances in Luxembourg**



**Assessment of progress in specific policy areas:**

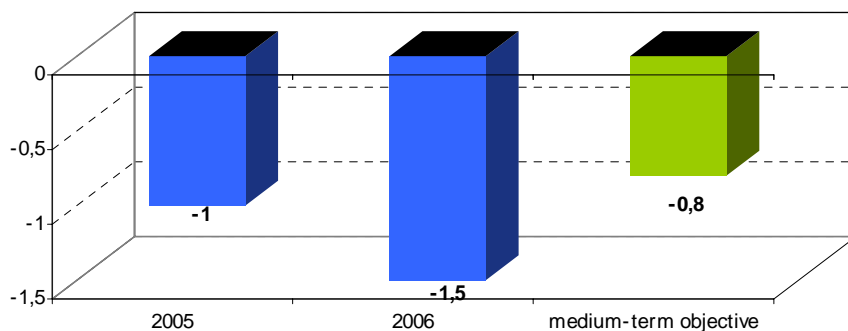
**Q 1: Progress towards the medium-term objective**



**Q 2: Progress in reforms of social security systems in view of the projected costs of an ageing population**

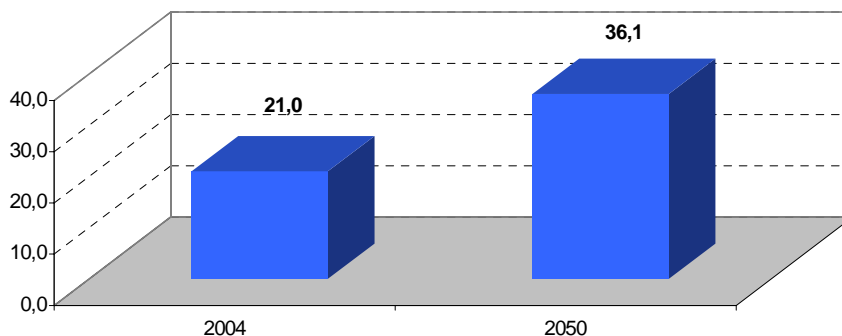


Public Balance in % of GDP: Luxembourg



Source: European Commission

Share of people older than 65 in % of working age people: Luxembourg



Source: European Commission