



**ASSESSMENT BY GREEK BUSINESS FEDERATION:**

Contact the expert: [\(email\)](#)

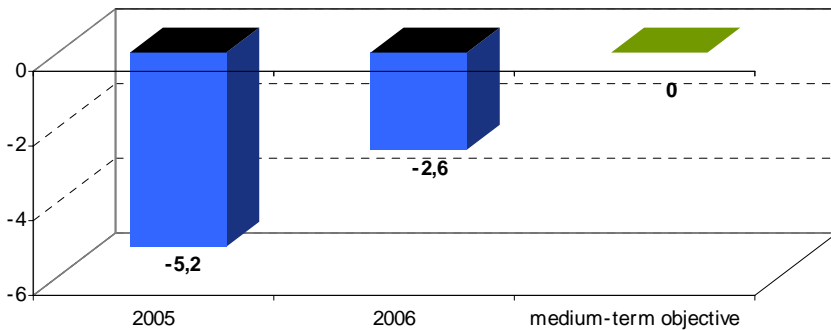
**Overall progress towards sustainable public finances in Greece** 

**Assessment of progress in specific policy areas:**

**Q 1: Progress towards the medium-term objective** 

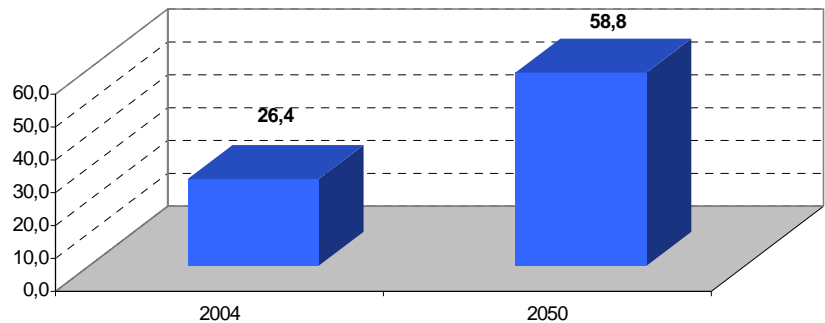
**Q 2: Progress in reforms of social security systems in view of the projected costs of an ageing population** 

Public Balance in % of GDP: Greece



Source: European Commission

Share of people older than 65 in % of working age people: Greece



Source: European Commission