



ASSESSMENT BY ROMANIAN BUSINESS FEDERATION:

Contact the expert: [\(email\)](#)

Overall progress towards sustainable public finances in Romania



Assessment of progress in specific policy areas:

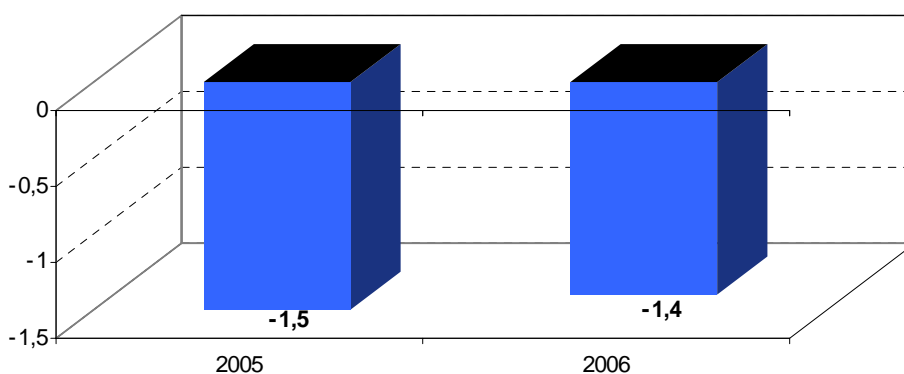
Q 1: Progress towards the medium-term objective



Q 2: Progress in reforms of social security systems in view of the projected costs of an ageing population



Public Balance in % of GDP: Romania



Source: European Commission



ASSESSMENT BY ROMANIAN BUSINESS FEDERATION:

Contact the expert: [\(email\)](#)

Overall progress in reforms to create a more competitive business environment in Romania



Assessment of progress in specific policy areas:

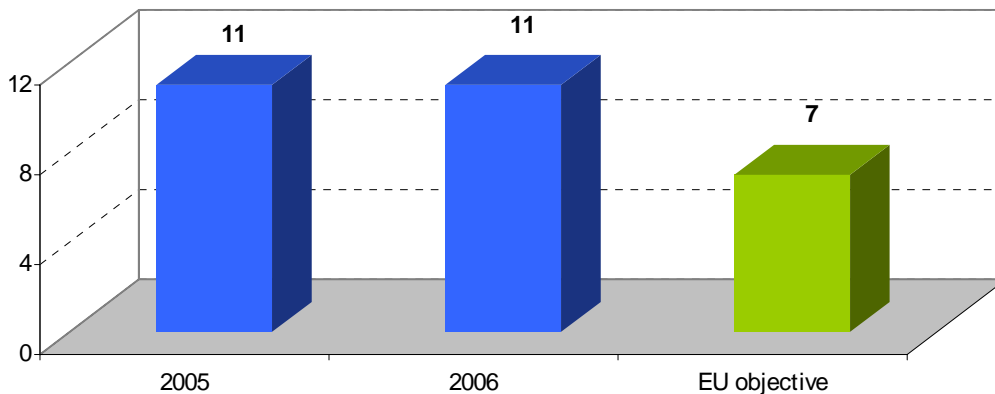
Q 1: Progress in reforms to improve **business regulations**



Q 2: Progress in reforms to create a **supportive environment for SMEs:**



Days needed to start a business in: Romania



Source: World Bank



ASSESSMENT BY ROMANIAN BUSINESS FEDERATION:

Contact the expert: [\(email\)](#)

Overall progress in reforms to improve the efficiency of research and innovation policy in Romania



Assessment of progress in specific policy areas:

Q 1: Progress in reforms to improve the research environment

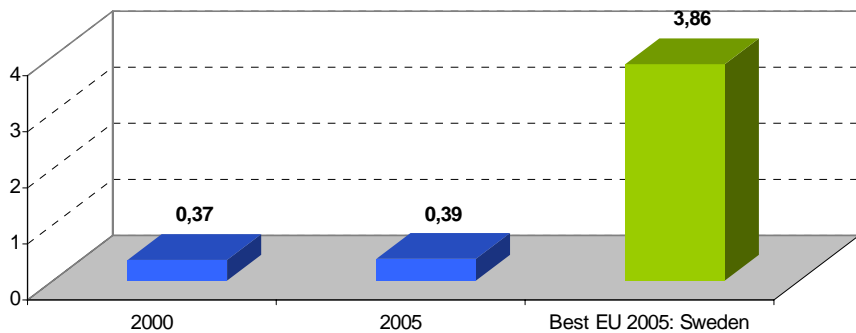


Q 2: Progress in reforms to facilitate and spread the effective use of ICT



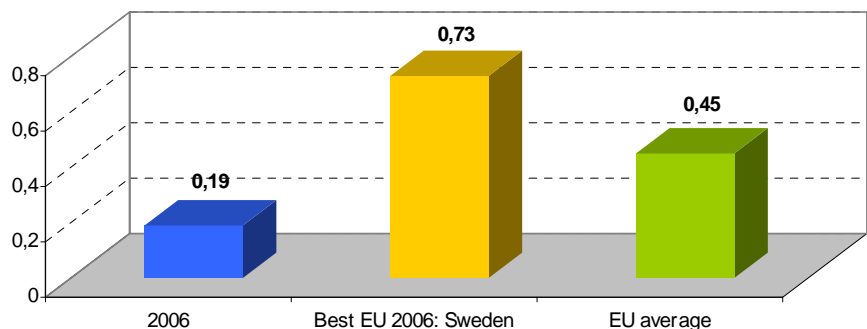
Q 3: Progress in reforms to improve conditions for innovation

R&D Spending in % of GDP: Romania



Source: Eurostat

EU Innovation Scoreboard¹: Romania



Source: European Commission

¹The EU Innovation Scoreboard aggregates a number of specific indicators measuring the innovation performance into a value between 0 (lowest) and 1 (highest)



ASSESSMENT BY ROMANIAN BUSINESS FEDERATION:

Contact the expert: [\(email\)](#)

Overall progress in reforms to transpose and enforce
internal market legislation in **Romania**

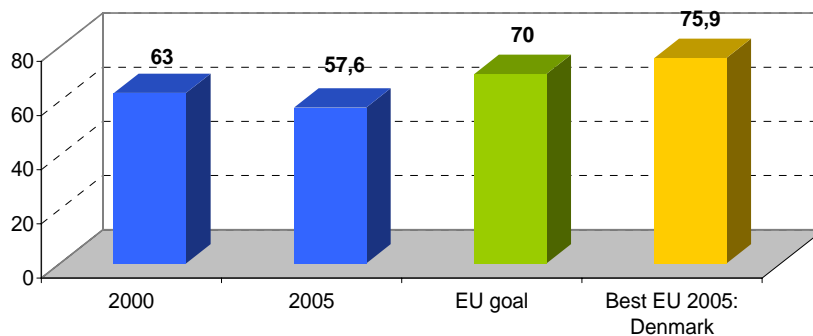
Assessment of progress in specific policy areas:

Q 1: Progress in implementing the internal market for **energy**

.....

**ASSESSMENT BY ROMANIAN BUSINESS FEDERATION:**Contact the expert: [\(email\)](#)**Overall progress in reforms to improve the functioning of the labour market in Romania****Assessment of progress in specific policy areas:****Q 2:** Progress in reforms to **improve work incentives****Q 3:** Progress in reforms to improve **labour regulation flexibility****Q 4:** Progress in reforms to improve **active labour market policies****Q 5:** Progress in reforms to ensure employment-friendly **labour cost and wage developments**

Employment Rate in % of Working Age Population:
Romania



Source: Eurostat



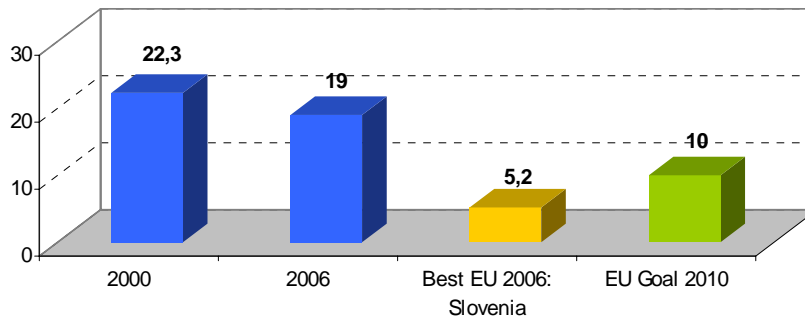
ASSESSMENT BY ROMANIAN BUSINESS FEDERATION:

Contact the expert: [\(email\)](#)

Overall progress in reforms to adapt education and training systems to new labour market requirements in Romania

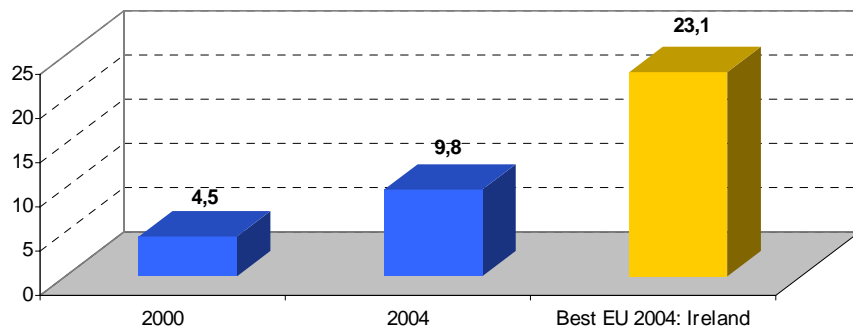


Early School Leavers in % of 18-24 years old with at most lower secondary education: Romania



Source: Eurostat

Science & Technology Graduates per 1000 population aged 20-29 years: Romania



Source: Eurostat