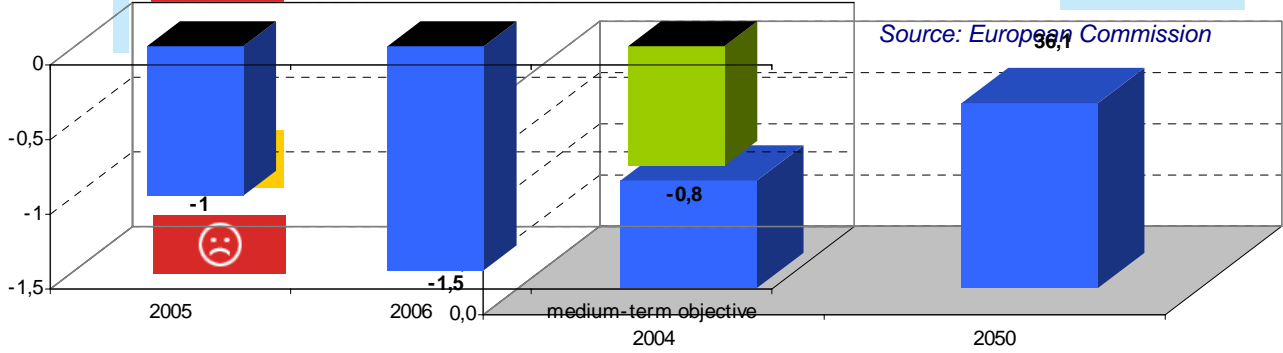




**ASSESSMENT BY LUXEMBOURG BUSINESS FEDERATION:**

Public Balance in % of GDP - Luxembourg expert: (email) Share of people older than 65 in % of working age people: Luxembourg



Source: European Commission



**ASSESSMENT BY LUXEMBOURG BUSINESS FEDERATION:**

Contact the expert: [\(email\)](#)

**Overall progress in reforms to create a more competitive business environment in Luxembourg**



**Assessment of progress in specific policy areas:**

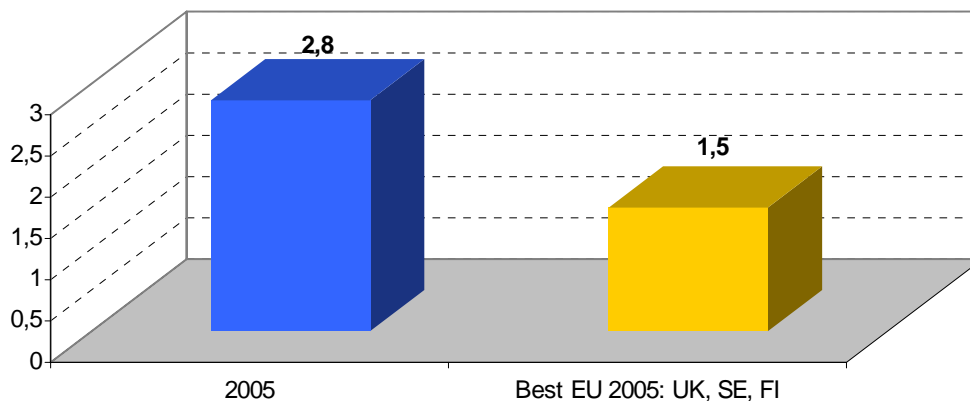
**Q 1: Progress in reforms to improve business regulations**



**Q 2: Progress in reforms to create a supportive environment for SMEs:**



**Administrative burden in % of GDP: Luxembourg**



Source: European Commission



**ASSESSMENT BY LUXEMBOURG'S BUSINESS FEDERATION:**

Contact the expert: [\(email\)](#)

**Overall progress in reforms to improve the efficiency of research and innovation policy in Luxembourg**



**Assessment of progress in specific policy areas:**

**Q 1: Progress in reforms to improve the research environment**



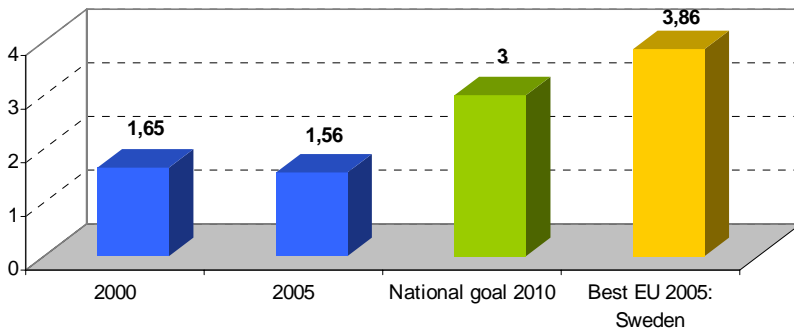
**Q 2: Progress in reforms to facilitate and spread the effective use of ICT**



**Q 3: Progress in reforms to improve conditions for innovation**

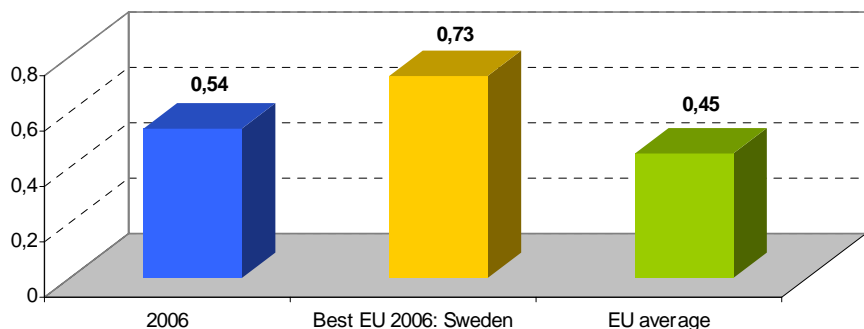


R&D Spending in % of GDP: Luxembourg



Source: Eurostat

EU Innovation Scoreboard<sup>1</sup>: Luxembourg



Source: European Commission  
<sup>1</sup>The EU Innovation Scoreboard aggregates a number of specific indicators measuring the innovation performance into a value between 0 (lowest) and 1 (highest)



**ASSESSMENT BY LUXEMBOURG BUSINESS FEDERATION:**

Contact the expert: [\(email\)](#)

**Overall progress in reforms to transpose and enforce internal market legislation in Luxembourg**

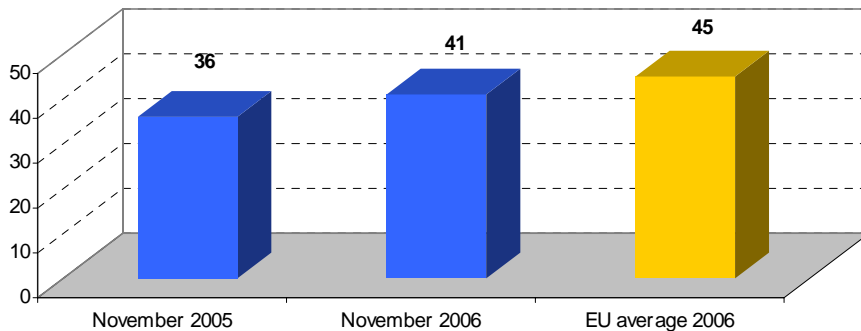


**Assessment of progress in specific policy areas:**

**Q 1: Progress in implementing the internal market for energy**

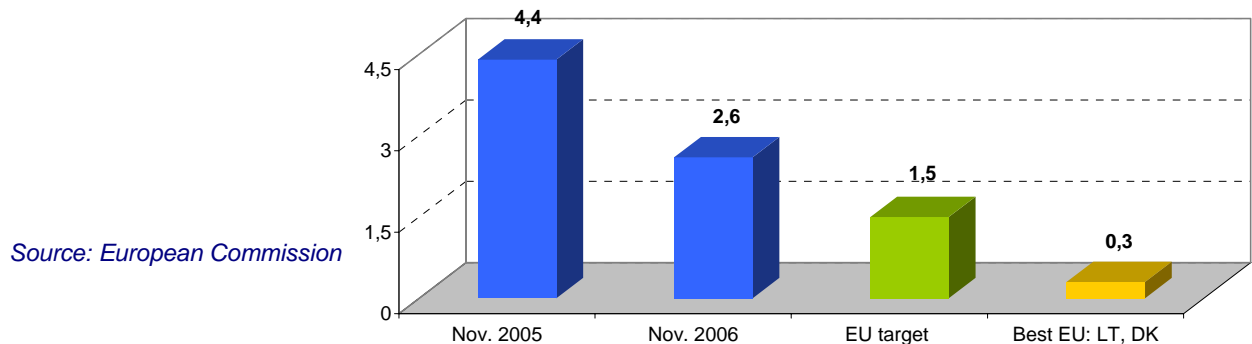


**Infringement Procedures: Luxembourg**



Source: European Commission

**Internal Market Directives not yet transposed in % of all Directives: Luxembourg**



Source: European Commission



**ASSESSMENT BY LUXEMBOURGI BUSINESS FEDERATION:**

Contact the expert: [\(email\)](#)

**Overall progress in reforms to improve the functioning of the labour market in Luxembourg**



**Assessment of progress in specific policy areas:**

**Q 2:** Progress in reforms to improve work incentives



**Q 3:** Progress in reforms to improve labour regulation flexibility



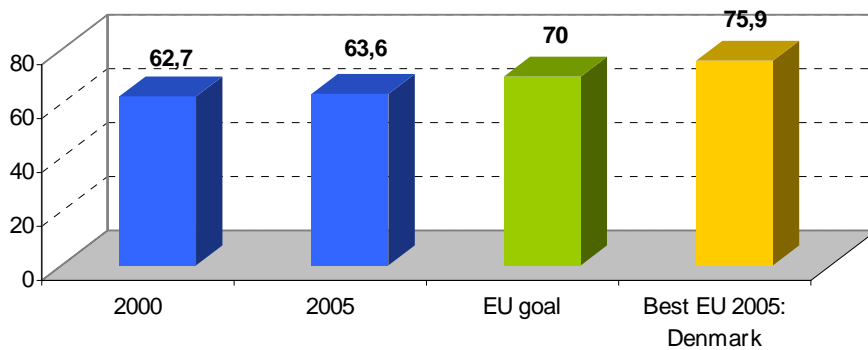
**Q 4:** Progress in reforms to improve active labour market policies



**Q 5:** Progress in reforms to ensure employment-friendly labour cost and wage developments

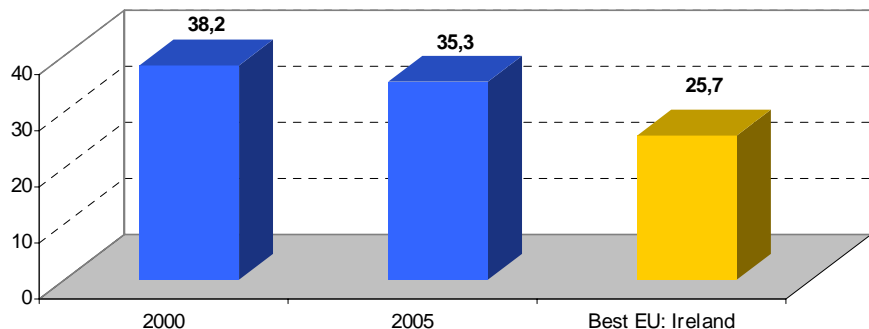


**Employment Rate in % of Working Age Population:  
Luxembourg**



Source: Eurostat

**Tax wedge<sup>1</sup> in: Luxembourg**



Source: OECD

<sup>1</sup> The tax wedge is the share of total labour costs taken by the state in income tax plus employer and employee social security contributions, minus any cash benefits paid



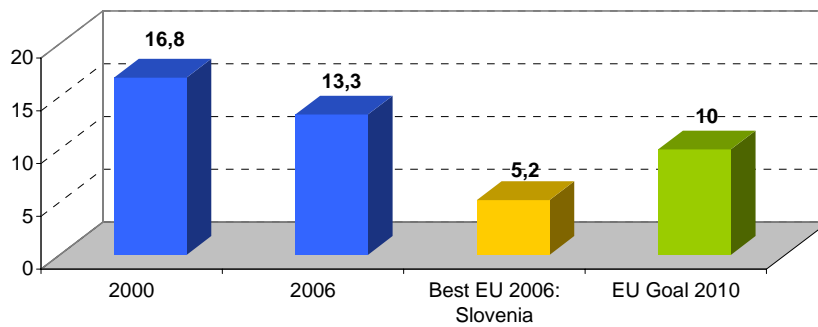
**ASSESSMENT BY LUXEMBOURG BUSINESS FEDERATION:**

Contact the expert: [\(email\)](#)

**Overall progress in reforms to adapt education and training systems to new labour market requirements in Luxembourg**

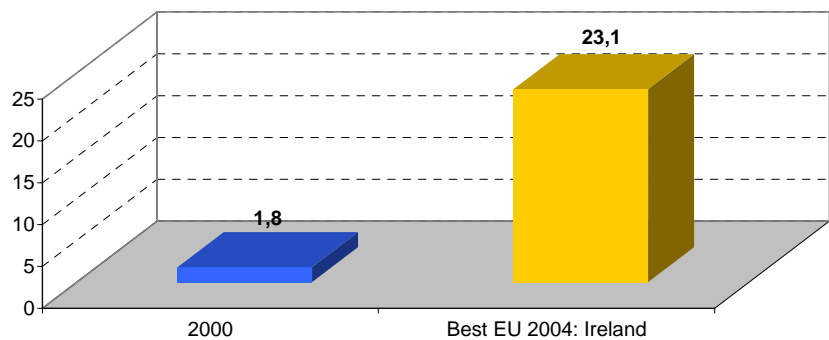


**Early School Leavers in % of 18-24 years old with at most lower secondary education: Luxembourg**



Source: Eurostat

**Science & Technology Graduates per 1000 population aged 20-29 years: Luxembourg**



Source: Eurostat